

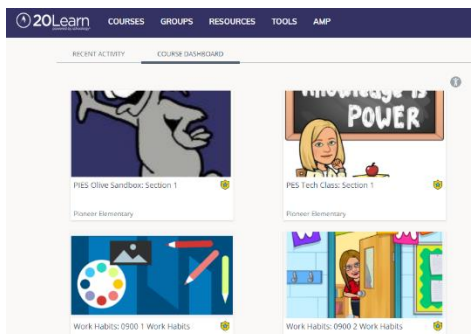
Dear Parents/Guardians,

Pioneer is using Schoology for one of our eLearning platforms. Schoology enables our students, parents and teachers to engage with learning materials and their school community from the classroom and beyond. You can access this resource at <https://asd20.schoology.com> or it is linked to our Pioneer logins page under ASD20 Learn.



User Name: xxxxxx@msa.asd20.org (6 digit user number)

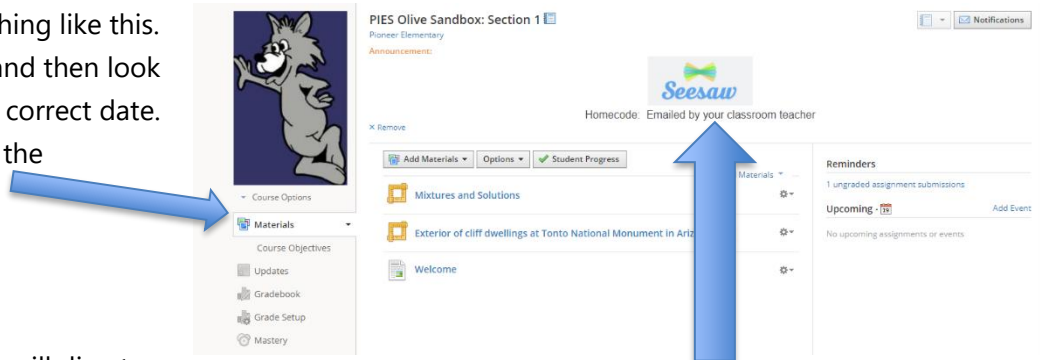
Password: Super Secret Password



After you have logged in, you will see a dashboard that looks like this:

Navigate to the specials course and click on the correct class for the week.

The course will look something like this. Click on the materials tab and then look for an assignment with the correct date. Complete the directions in the assignment



Some specials assignments will direct you to a different site like SeeSaw or Rockalingua, click on the SeeSaw or Rockalingua image at the top of the dashboard to access these assignments.

To access your parent Schoology account, you can use your Infinite Campus Parent Portal login information. If you can't remember your user name or password, please send an email to Pioneer's Digital coach, olive.mcrae@asd20.org. We value your participation in your child's education, and we encourage you to read Schoology's Privacy Policy & Terms of Use at <https://www.schoology.com/privacy>. Student progress and activity will be monitored by faculty to ensure a safe, secure, and controlled environment.

If you have questions or feedback regarding Schoology, please email us at olive.mcrae@asd20.org.

[Watch this video on how to complete a discussion.](#)

[Watch this video on how to complete an assignment](#)